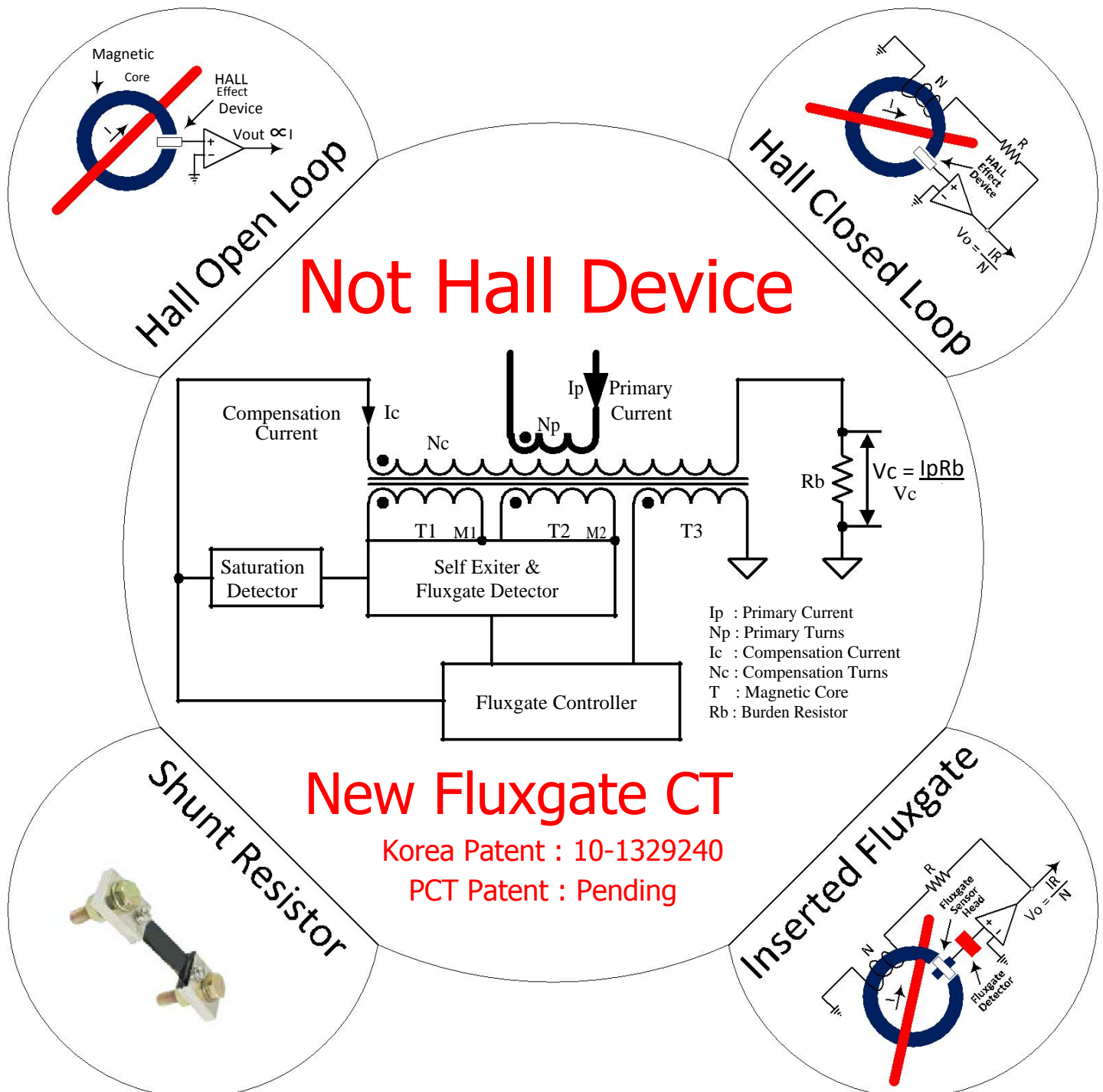


Why is the Current Sensor NFCT ?

(NFCT : New Fluxgate Current Transducer)

The NFCT is exactly what you need !

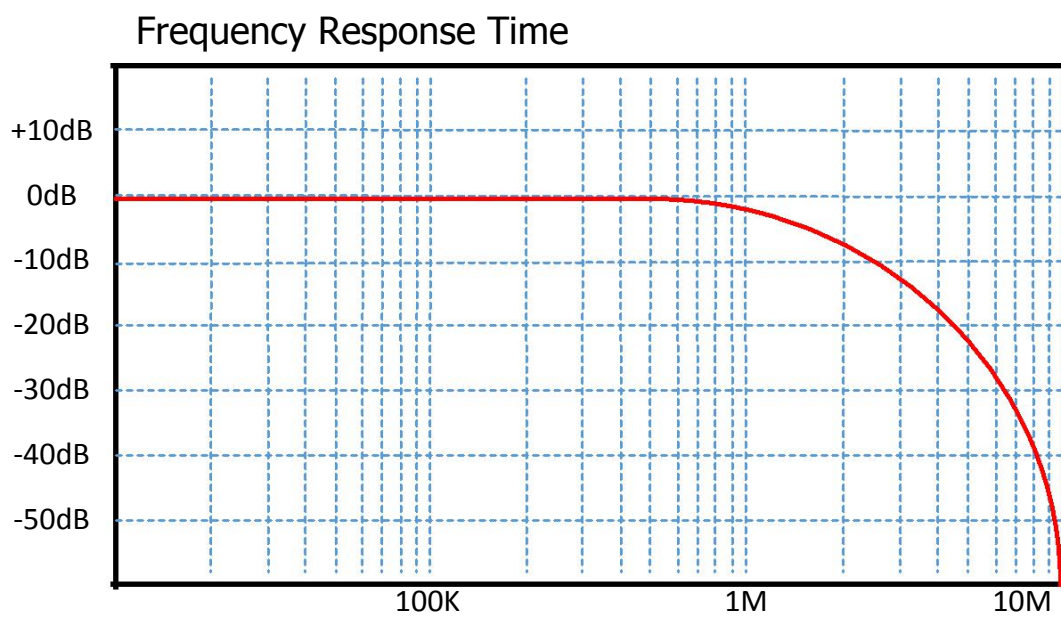
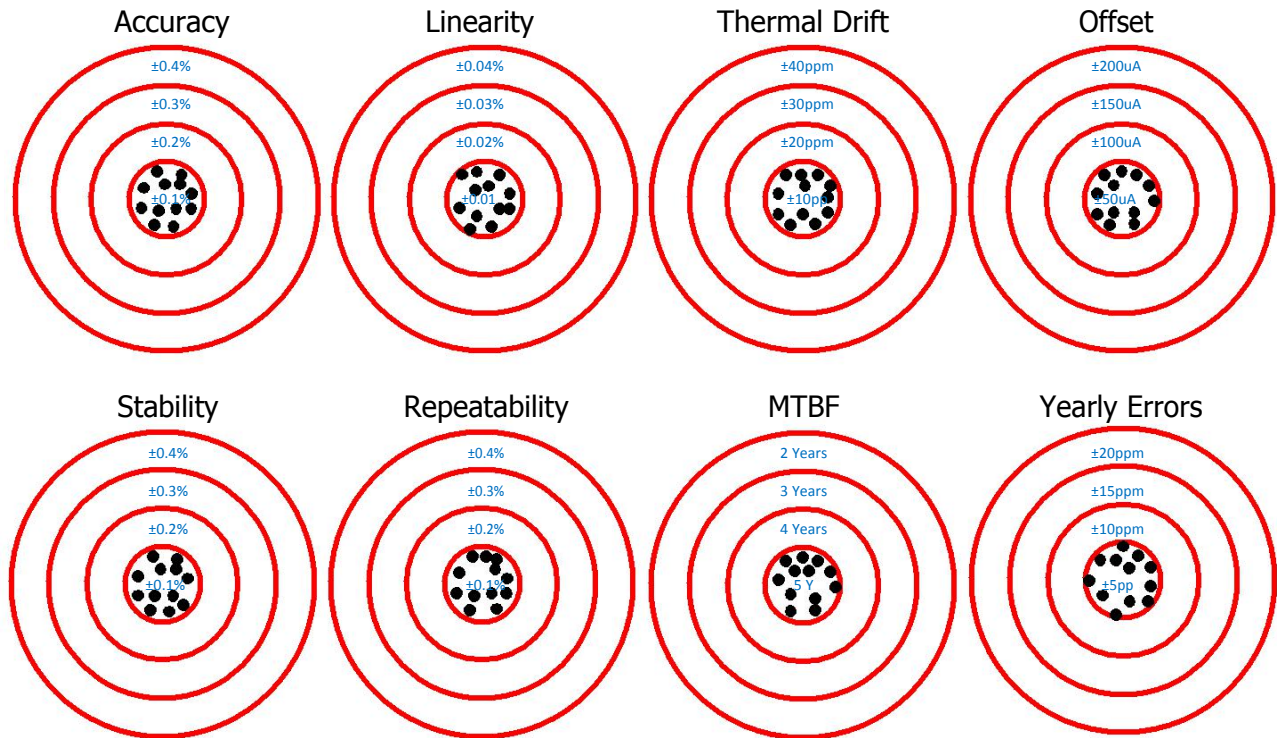


RARA Electronics Corporation

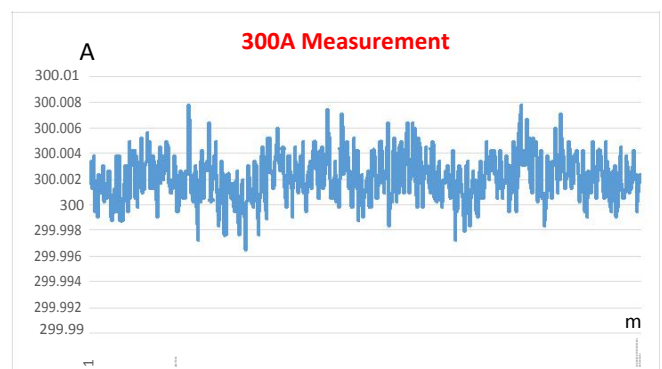
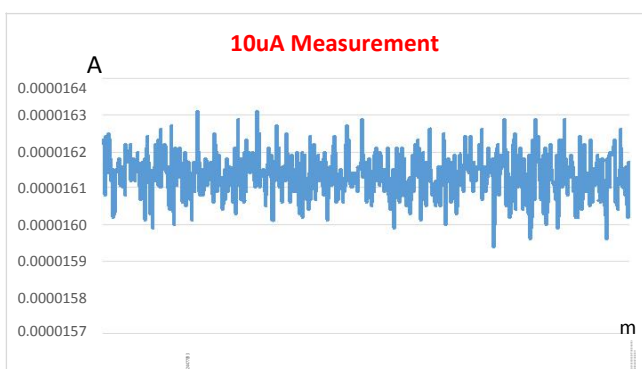
Head Office: 인천광역시 남동구 고잔동 666-19 (남동공단 100B-11L)

Tel: 032-817-4325 Fax: 032-817-4329 E-mail: sales1@raraohm.com <http://www.rara.co.kr>

1. New Fluxgate 전류센서 특성



2. Real Measurement Data



3. Product Families



Case Type : H

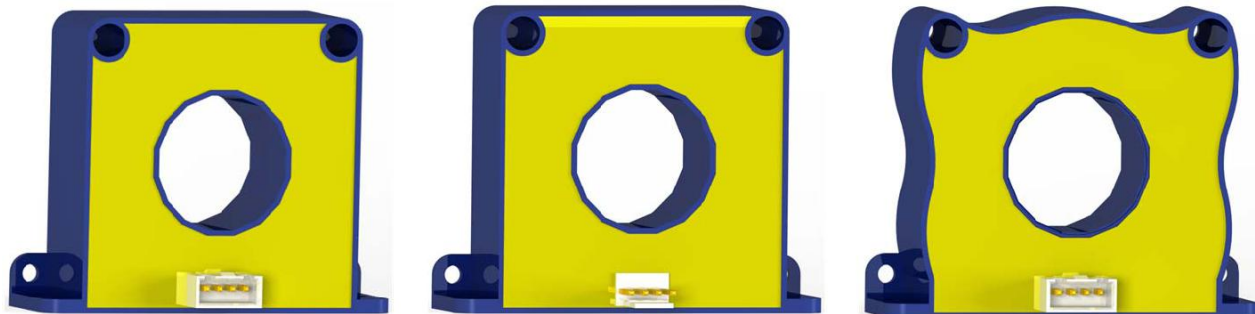
Case Type : A

Case Type : B



Case Type : D

Case Type : I



Case Type : J

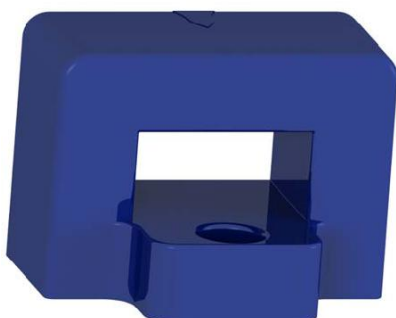
300A



Case Type : K



300A



Case Type : E



Case Type : C



300A



Case Type : F



Case Type : G

4. Products List

Products Code: NF 300A U12 D Y 4KTO B I

Current Capacity	Input Power	Case Type	Connector Type	Turn Number	Tolerance	TEMP SPEC
0A01 : 10mA	U05 : + 5V	A : 100A, 8mm	M : Molex 5045	100T : 100Turn	F : ± 1%	C : Commercial
0A02 : 20mA	B05 : ± 5V	B : 150A, 10mm	N : Molex 53259	250T : 250Turn	D : ± 0.5%	I : Industry
0A30 : 300mA	U12 : + 12V	C : Clamp, 15mm	P : PCB Pin	300T : 300Turn	B : ± 0.1%	A : Automotive
05A0 : 5A	U15 : + 15V	D : 300A, 24mm	Y : Yeon Ho	500T : 500Turn	A : ± 0.05%	M : Military
10A0 : 10A	B15 : ± 15V	E : 400A, 10x20mm		1KT0 : 1000Turn	T : ± 0.01%	
25A0 : 25A	U24 : + 24V	F : 500A, 32mm		1KT5 : 1500Turn		
120A : 120A	B24 : ± 24V	G : 1000A, 42mm		2KT0 : 2000Turn		
300A : 300A		H : 50A, 13x16x19		2KT5 : 2500Turn		
500A : 500A		I : 300A, 24mm		3KT0 : 3000Turn		
1KA0 : 1000A		J : 300A, 24mm		4KT0 : 4000Turn		
2KA0 : 2000A		K : 300A, 24mm				
2KA5 : 2500A						
5KA0 : 5000A						
100K : 100KA						

Current Product Families

NF0A30U05AP250TBI	NF50A0B15AP1K5TBI	NF300AU05DY2KT0BA
NF0A30U05AY250TBI	NF50A0B15AY1K5TBI	NF300AU05DM2KT0BA
	NF50A0B15AM1K5TBI	
NF05A0U05AP300TBI	NF50A0B15AP1K5TBI	NF300AU05DY2KT0BI
NF05A0U05AY300TBI	NF50A0B15AY1K5TBI	NF300AU05DM2KT0BI
	NF50A0B15AM1K5TBI	
NF25A0U05AP500TBI		NF50A0U05CY1KT0BI
NF25A0U05AY500TBI		NF50A0U05CM1KT0BI
	NF300AU12DY4KT0BI	
NF55A0U05AP1KT0BI	NF300AU12DM4KT0BI	
NF55A0U05AY1KT0BI		
	NF300AU12DY4KT0BA	
NF100AU05AP1KT5BI	NF300AU12DM4KT0BA	
NF100AU05AY1KT5BI		

5. Products Selection Guide

TempOperating (°C)	Linearity (%)	Accuracy (%)	Bandwidth (KHz)	Offset Current (A)	Secondary Resistor (Ω)	Secondary current (A)	Measuring Resistor (Ω)	Measuring range (A)	Number Turn (T)	Connection Type	Case Type	Power Supply		Nominal Primary Current (A r.m.s)	
C I A M	F D B A T T	F D B A T T	100 ~ 500	≤80	≤25	0.0012	2K	1	250	M Y P	A	-9~-18	+9~+18	0.3	
							225						+5		
						0.0167	300	10	300			30	-9~-18	+9~+18	5
							15							+5	
						0.02	240	20	240			15	-9~-18	+9~+18	10
							5							+5	
						0.05	140	40	140			5	-9~-18	+9~+18	25
							5							+5	
						0.055	150	70	150			5	-9~-18	+9~+18	55
							5							+5	
						0.08	20	150	150	3	-9~-18	+9~+18	120		
							3					+5			
						0.075	40	200A	2000	5	-9~-18	+9~+18	150		
							5					+5			
						0.15	30	450	2000	2.5	-9~-18	+9~+18	300		
2.5	+5														
0.25	5	650	2000	M,Y	F	-15~-18	+15~+18	500							
0.5	2	1200	2000	M,Y	G	-15~-18	+15~+18	1000							
0.5	2	2400	4000	M,Y	H	-15~-18	+15~+18	2000							
Configure to order															
5000	+15~+24	-15~-24	I	N											
10000	+15~+24	-15~-24	J	N											
C I A M	F D B A T T	F D B A T T	100 ~ 500	≤80	≤35	0.1	5	150	1000	Y	C	-9~-18	+9~+18	100	
							1.2						+5		
					≤15	0.3	30	450	1000	M,Y	E	-9~-18	+9~+18	300	
							2.5						+5		
					≤20	0.3	30	400	1000	M,Y	K	-9~-18	+9~+18	300	
							2.5						+5		
					≤25	0.002	2K	1	250	P	H	-9~-18	+9~+18	0.5	
							225						+5		
					≤35	0.02	240	20	500			15	-9~-18	+9~+18	10
							15							+5	
					≤35	0.05	140	40	500			5	-9~-18	+9~+18	25
							5							+5	
					≤45	0.05	150	70	1000			5	-9~-18	+9~+18	50
							5							+5	